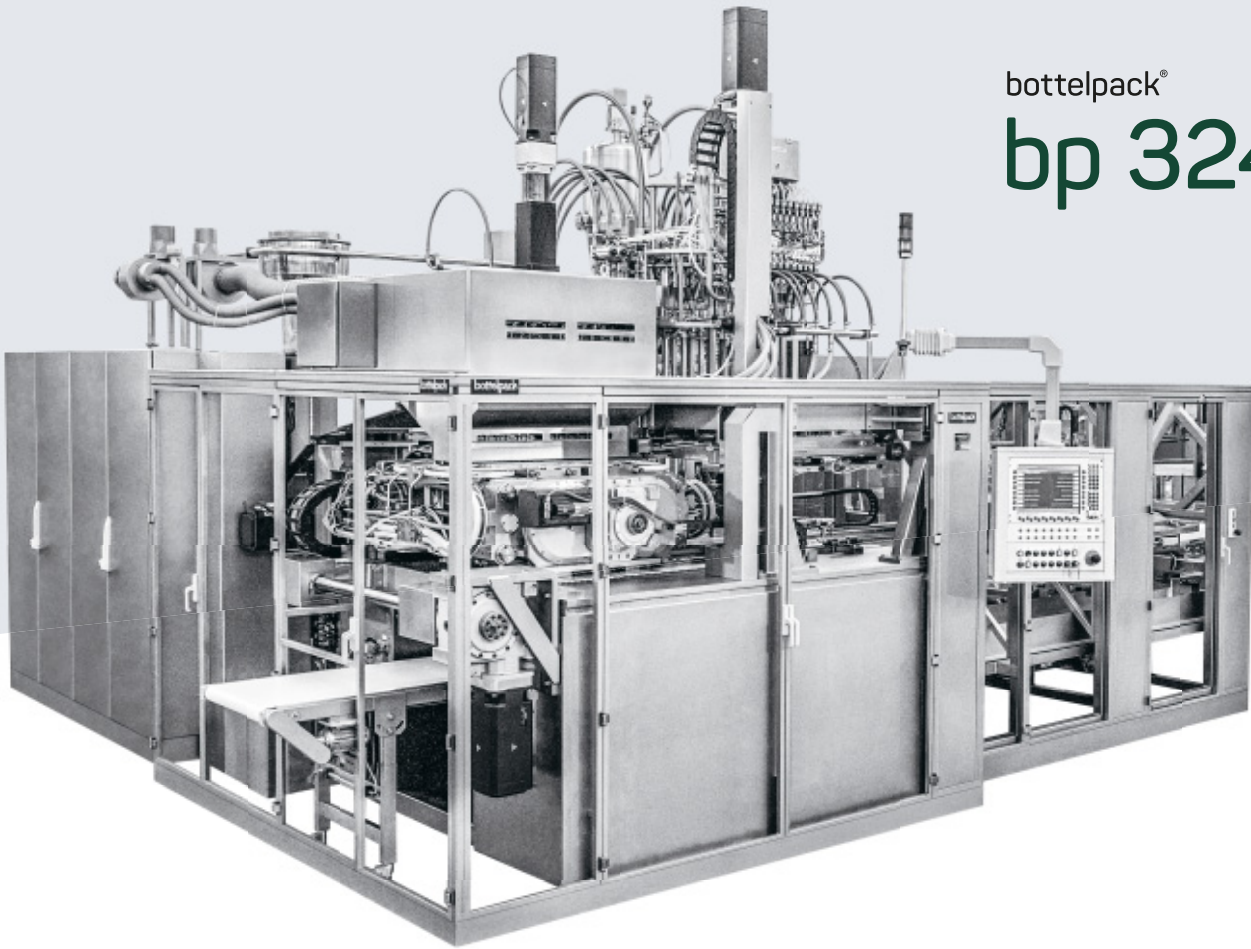


bottelpack®  
**bp 324**



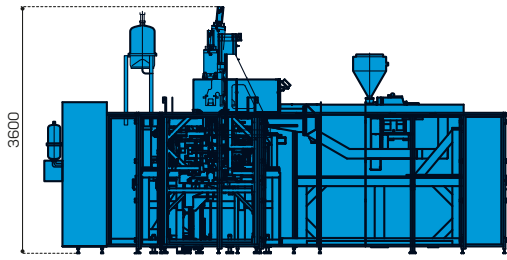
## Aseptic Blow-Fill-Seal packaging machine for the production of bottles

bp 324	volume max. (ml)	max. container width (mm)	capacity (approx. pieces/h)
4-cavities	2,000	157	800
6-cavities	1,500	100	1,350
8-cavities	1,000	76	1,800
10-cavities	500	58	2,500
12-cavities	500	50	3,000
14-cavities	250	42	3,500
16-cavities	200	36	4,000

**Capacity indications subject to:**  
type of plastic, shape of ampoule, weight  
of ampoule, nature of filling liquid

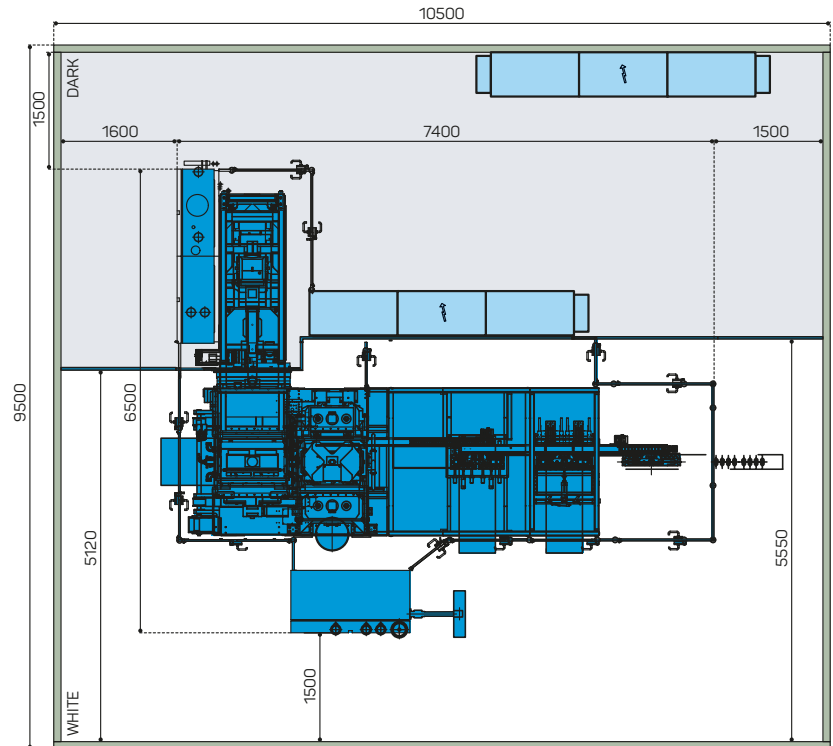


x = max. container width



- Machine
- Cleanroom with dark/white separation
- Control cabinet

Upon request the machine can be executed without dark/white separation. Dimensions are depending on final project specifications.



### Technical Data

- ▶ **Power:**  
3 x 400 V + neutral + earth · 50/60 Hz
- ▶ **Extruder:**  
KP70-24D
- ▶ **Electrical supply:**  
Approx. 133 kVA
- ▶ **Ø Consumption:**  
Approx. 85 kW
- ▶ **Compressed air:**

  - Piston displacement approx. 1,000 sl/min in oil-free quality
  - Operation pressure 7 bar minimum
- ▶ **Cooling water (closed cycle cooling):**  
Approx. 5 m<sup>3</sup>/h with 12 °C and 4 bar, dirt-filtered ≤ 55 micron
- ▶ **City water consumption:**  
Approx. 60 l/h with 12 °C and 4 bar, dirt-filtered ≤ 55 micron
- ▶ **Steam (only for machines which are sterilized):**

  - Pure steam 2.5 bar, particle-filtered ≤ 1 micron (DIN58950-7)
  - Consumption at sterilization: approx. 60 kg/h

- ▶ **Dosing:**  
Time-pressure-dosing continuously adjustable for each single cavity with filling volumes between 50 ml and 2,000 ml
- ▶ **Extruder:**

  - Extruder with continuously regulable electric drive
  - Screw Ø 55 – 24D melting capacity up to max. 110 kg/h
  - The melting capacity refers to polyethylene LDPE up to 0.93 density – other plastics may vary
- ▶ **Extrusion head:**  
With automatic parison wall thickness control (PWTC) and exchangeable nozzles
- ▶ **Weight of machine:**  
Approx. 12 tons
- ▶ **Soil bearing value:**  
Approx. 1.6 tons/m<sup>2</sup>
- ▶ **Extra and special equipment:**

  - **coolBFS** to fill heat sensitive products
  - Multi-layer containers to provide gas permeation barriers
  - Integrated circulation function to fill suspensions
  - Laser system for container coding and separation
  - And many other customer specific options

Technical modifications reserved

Rommelag Kunststoff-Maschinen Vertriebsgesellschaft mbH  
Mayenner Straße 18 – 20 · 71332 Waiblingen · Germany  
T +49 7151 95811-0 · F +49 7151 15526 · mail.rd@rommelag.com · www.rommelag.com

Rommelag USA, Inc.  
27905 Meadow Drive · Suite 9 · Evergreen · CO 80439 · USA  
T +1 303 674 8333 · F +1 303 670 2666 · www.rommelag.com

Rommelag AG  
Fabrikweg 16 · 5033 Buchs · Switzerland  
T +41 62 834 55 55 · F +41 62 834 55 00 · mail.rch@rommelag.com · www.rommelag.com

Rommelag Trading (Shanghai) Co., Ltd.  
Room 104-107, 1st Floor · No. 510 Zhongshan South 2nd Road · Xuhui District  
200032 Shanghai · P.R. China  
T + 86 21 515 349 67 · F + 86 21 515 349 69 · www.rommelag.com