

# pharmastick CS





# extreme accessibility

Access to CS equipment is amazingly easy since it is provided with a series of assembly/disassembly assisted systems such as fillers, sealing and reel lifting groups.

Consequently accurate and user-friendly design allows operator and MNT technician to get access to any part and component without any difficulty so to implement easily any cleaning, parts replacement and control.

# easy cleaning

Parts in contact with product in stainless steel. Mirror polished surfaces.

Accurate design of each single detail in order to prevent any product deposit. All above features make CS packaging machine an extremely easy equipment to clean, with negligible time consumption.

# balcony and compact design

The Pharmastick Machine Mod. CS is designed for the pharmaceutical market.

The balcony design, the easy accessibility, the absence of external cables, leaning outside mechanical components make the equipment fully compliant with the most stringent GMP requirements.

The lower number of components fitted on give the machine a really compact design allowing the placement in absence of space.





## auger dosing system

**Multi-lane Auger Filler especially designed for pharmaceutical powders and products with poor flowability.**

The Unit is equipped with a Pre-feeding Group for a smooth and constant feed of the product into the dosing chamber, allowing high accuracy.

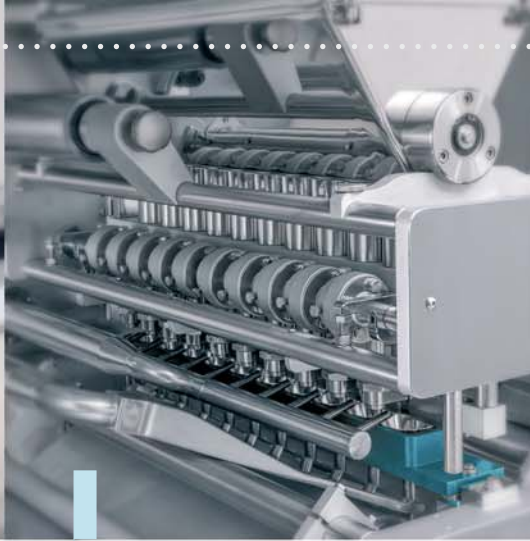
All parts in contact with the product are in stainless steel and mirror polished to avoid any product residue deposition.

The Filler Pharma grade Feeding Hopper is provided with a special stirring system able to avoid any phase separation of the product.

State of the Art Dosing Auger is driven by its own Brushless motor allowing fine adjustment on each lane.

Dosing Tubes Cooling System for optimal treatment of heat sensitive products.

The Dosing System can be easily removed by means of an automatic lifting device guaranteeing extreme accessibility and cleaning.



## volumetric dosing system

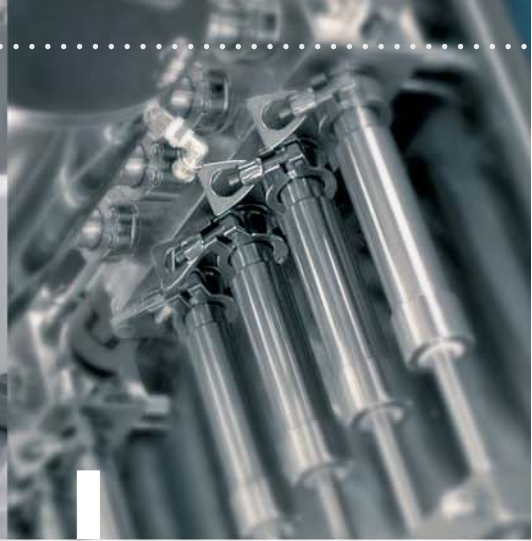
**Oscillating Dosing Cups System for free-flowing and granular products.**

The Group is installed on a sliding support that allows to remove and clean it easily without using any mechanical tool.

It is designed with:  
- Centralized dosing chamber adjustment;  
- Single dosing cup adjustment.

CS machines can be equipped with a new "Vacuum-phases" Dosing System aimed to ease the release of non free-flowing products and to guarantee non contaminated and tight seals (**patented system**).

All parts in contact with the product are in stainless steel and FDA approved material.



## liquid/pasty dosing system

**Filling System to dose liquid and pasty products.**

Hopper and Dosing Tubes designed with Clamp Connection for quick disassembly and cleaning.

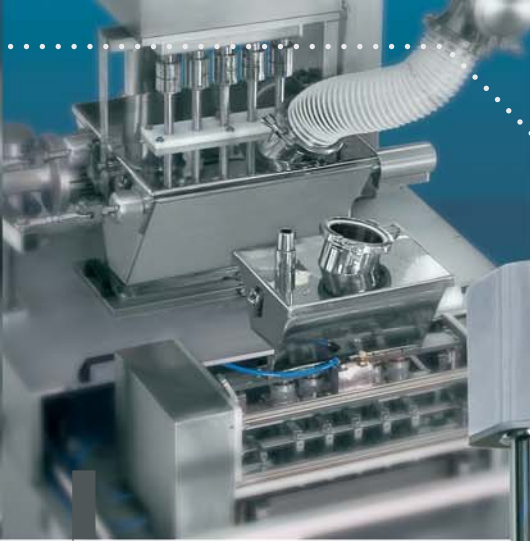
It is driven by Brushless Motor for fine adjustment.

CIP Equipment for assisted cleaning of the Dosing Unit.

## complete stick packaging line

**Complete stick packaging line for medium or high speed production complete with automatic feeding system Mod. S1 for stick counting to the down-stream cartoner.**



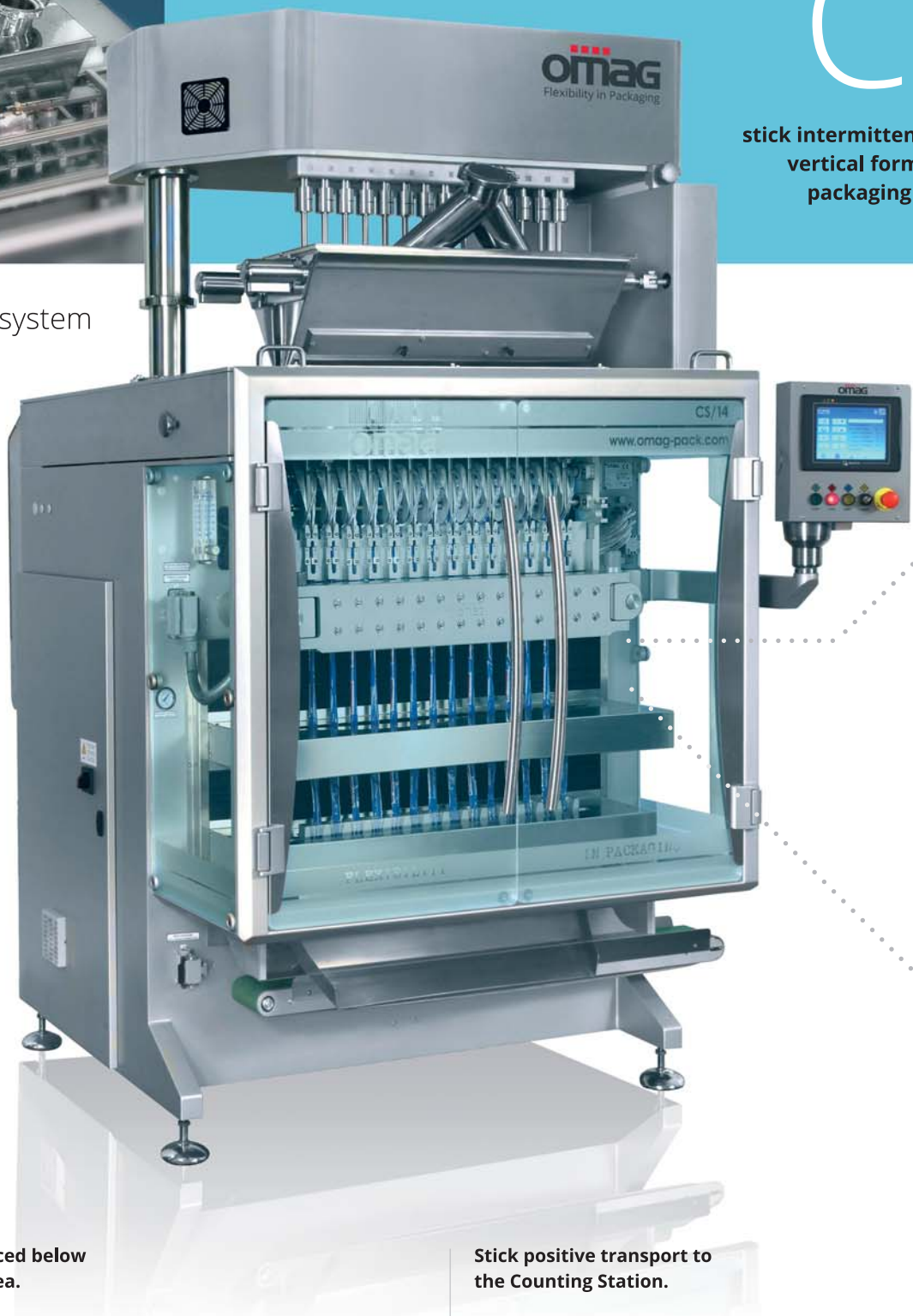


# CS

stick intermittent motion  
vertical form/fill/seal  
packaging machine

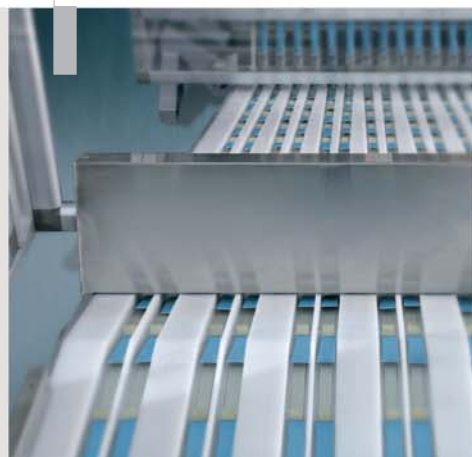
double feeding system

Thanks to the extreme accessibility, CS allows to install two dosing systems to be used alternatively



Stick pick-up system, placed below the horizontal cutting area.

Stick positive transport to the Counting Station.



## easy access to the sealing and cutting groups

All groups for vertical/horizontal sealing and for cutting have an easy access to be cleaned and removed.



## stick coding system

### **1-axe brushless actuator for printing head motion on CS.**

Linear actuator for horizontal traverse of one or more printing heads for sticks coding, by installing 1 printing head on a motorized support allowing movement inversion (the printing head can mark in both senses).

CS can be equipped with any thermal ink-jet printer.



## independent horizontal cutting group

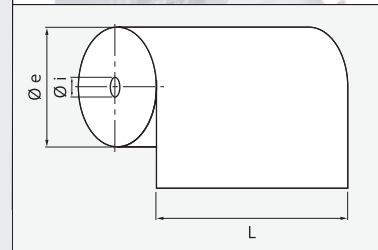
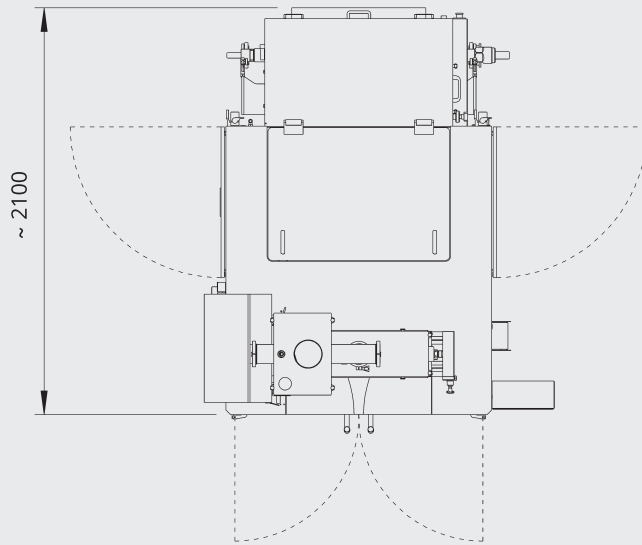
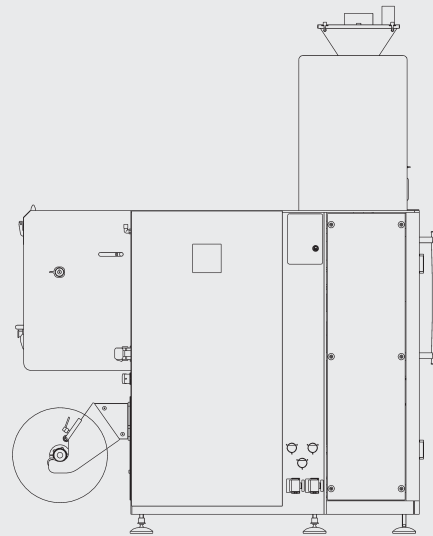
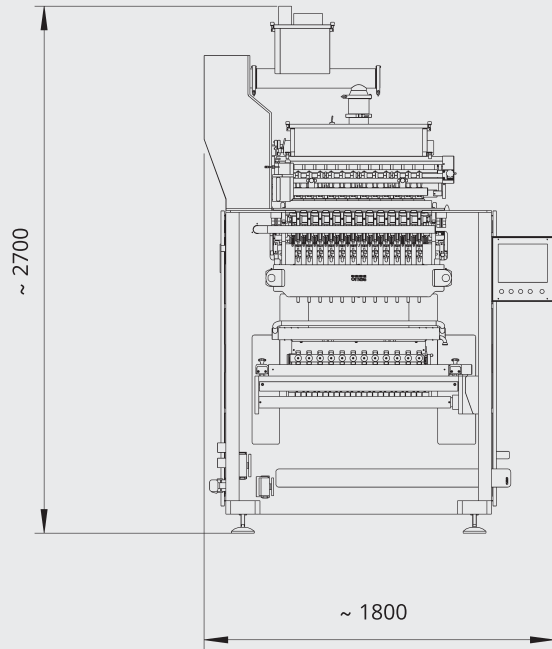
Blades are not inserted in the heated, horizontal sealing bars but in a standalone group.



**Pick-up Heads by vacuum cups and Stick transfer system to the buckets of a cartoner.**



## pharmastick CS / specifications



### Technical data

absorbed power	~ 4 kW
air consumption	~ 500 NI/min 6 bar
net weight	~ 2000 kg

### Reel size range

Ø e	min - max = 500 - 800 mm
Ø i	min - max = 76 - 150 mm
L	min - max = 600 - 1200 mm

OMAG reserves the right to update, change, modify or otherwise alter technical features and descriptions reported in this brochure at any time, based on future technical innovations and markets evolving requirements.